



## TRANSMISSION, DISTRIBUTION & INDUSTRIAL SYSTEMS ANALYSIS

ARC Flash Hazard

Power Flow

Short-Circuit

Motor Starting

Harmonic Analysis

And more...

### ARC Flash Hazard

The ARC Flash Hazard is an add-on module to our PSAF, CYMDIST and CYMTCC programs. This module is primarily designed to analyze and promote the electrical safety for employees working on or near electrical equipment. By increasing the understanding and awareness of electrical hazards, it is possible to minimize the risk of exposure to them and consequently avoid injury to individuals who work on or near electrical equipment.

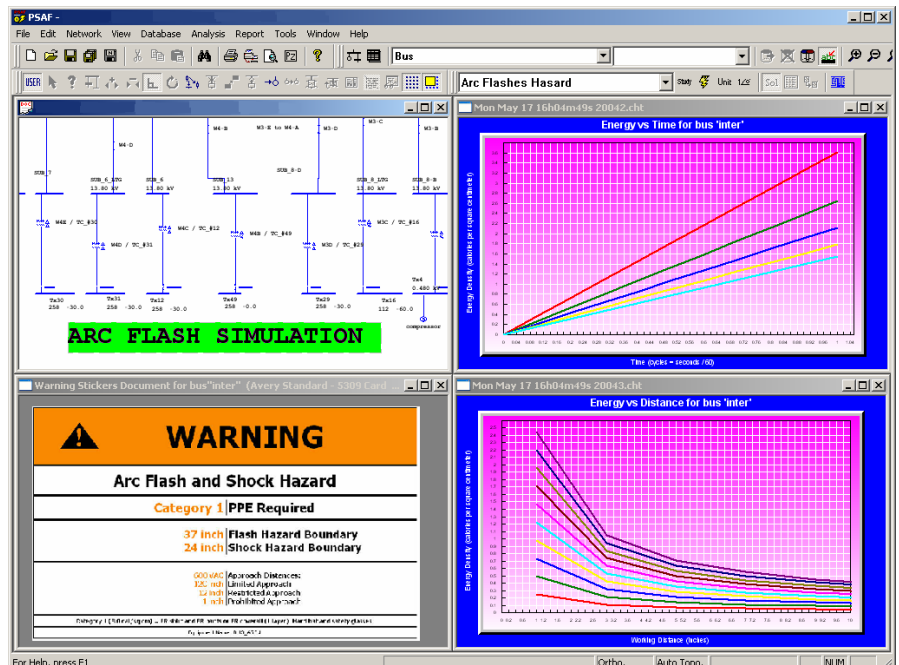
### Program Features

This module computes the necessary parameters required to assess the risk level and adopt the adequate safety procedures.

It complies with industry recognized standards and methods for performing ARC Flash Hazard calculations namely:

- The Electrical Safety Requirements for Employee Workplaces (NFPA-70E-2004).
- Institute of Electrical and Electronic Engineers (IEEE-1584-2002).

The above guidelines facilitate the calculation of arc flash hazards in different types of equipment in various power systems.



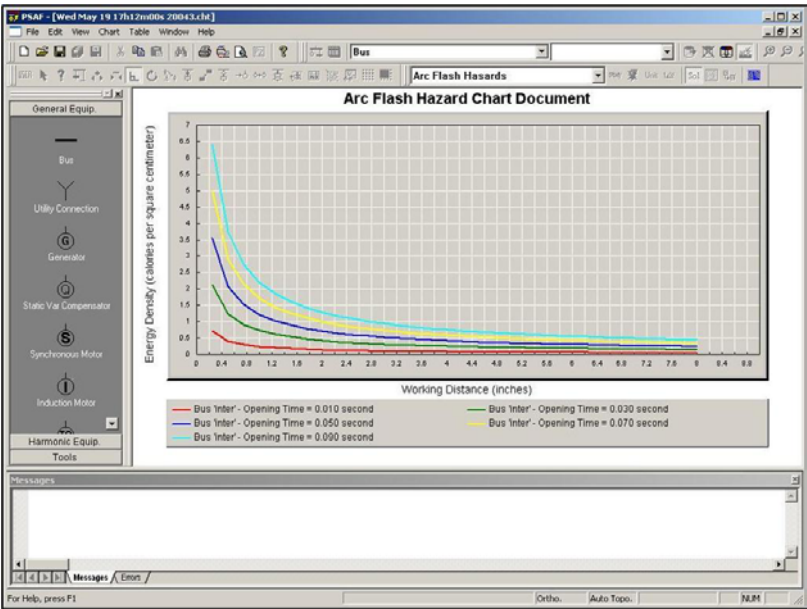
### Seamless Interface to PSAF, CYMDIST and CYMTCC

The bus data of any network created with our PSAF, CYMDIST or CYMTCC software can be supplemented with ARC Flash related information such as working distance, bus gap, connected equipment and exposed circuit in cubic enclosures or in open air.

In addition, the ARC Flash Hazard module calculates the maximum bolted (3) phase short circuit levels at the desired work place (Bus) for ARC Flash Hazard calculations.



Program Features



The ARC Flash Hazard module also utilizes our CYMVIEW Simulation Results Manager Program to generate the required results, including:


- Incident Energy versus Distance with a constant clearing time.
- Incident Energy versus Time with user defined distance.
- Flash hazard boundary versus Time.

Warning Labels

The program generates reports that can be printed directly on ARC Flash Hazard weatherproof warning stickers.

These warning stickers include all the necessary information such as :

- ARC Flash Hazard boundary.
- Energy density .
- Hazard / Risk category class.
- Personal Protective Equipment (PPE).
- Potential shock hazard.
- Limited, restricted and prohibited approach boundaries.
- Equipment identification.

 <b>WARNING</b>	
<b>Arc Flash and Shock Hazard</b>	
<b>Category 1   PPE Required</b>	
<b>37 inch</b> <b>24 inch</b>	<b>Flash Hazard Boundary</b> <b>Shock Hazard Boundary</b>
<b>600 VAC</b> <b>120 inch</b> <b>12 inch</b> <b>1 inch</b>	Approach Distances: Limited Approach Restricted Approach Prohibited Approach
Category 1 (3.0 cal/sq cm) = FR shirt and FR pants or FR coverall (1 layer). Hard hat and safety glasses.	
Equipment Name: BUS_ARC4	

Multiple label formats are available, and the program provides the capability to customize your own labels.



Canada & International  
1485 Roberval, Suite 104  
St-Bruno, QC Canada J3V 3P8  
Tel. (450) 461-3655  
Fax (450) 461-0966

U.S.A.  
67, South Bedford St, Suite 201 East  
Burlington, MA 01803-5177 USA  
Tel (781) 229-0269  
Fax (781) 229-2336

U.S.A. & Canada  
1-800-361-3627  
[www.cyme.com](http://www.cyme.com)  
[info@cyme.com](mailto:info@cyme.com)